



# CAPITAL <sup>2025</sup> kick-off CAMPAIGN

**TRACY WILSON**, President  
[president@waldenhumane.org](mailto:president@waldenhumane.org)

**TRISHA CRAWLEY**, Treasurer  
[treasurer@waldenhumane.org](mailto:treasurer@waldenhumane.org)

**RYAN BONIFACE**, Manager  
[manager@waldenhumane.org](mailto:manager@waldenhumane.org)

**LISA DENNIS**, Community Outreach  
[lisa@waldenhumane.org](mailto:lisa@waldenhumane.org)

**2489 ALBANY POST ROAD  
WALDEN, NY 12586**

**P: 845-778-5115**

   [@waldenhumane](https://www.instagram.com/waldenhumane)

[www.waldenhumane.org/capital](http://www.waldenhumane.org/capital)

SCAN ME



# OUR HISTORY



## 1974

The Humane Society of Walden (HSW) is a 501(c)(3) nonprofit organization, incorporated in New York in 1974, and has remained dedicated to the welfare of homeless animals ever since.

Our roots trace back to the 1950s, when Florence Thiele and local residents began rehoming stray animals through a network of foster homes. Determined to establish a dedicated shelter, Thiele led fundraising efforts, and with donated land and the help of Wallkill Correctional Facility inmates, the shelter was built.

In the 1980s, HSW received its first significant estate bequest. Thiele arranged for a local homeowner on Edmunds Lane in Pine Bush to bequeath her house and its contents to the shelter, which were then sold at auction.

1984 a crematory was added to provide pet owners with low-cost cremations for those whose pets have passed on.

In 2000 local teacher and animal lover Karen Morris founded the 'For the Animals Club' at Valley Central High School. For over 25 years their mission is simple yet powerful: to provide support to the Humane Society of Walden and its furry inhabitants. Throughout the school year, dedicated students channel their passion for animals into action. To date Morris still advises the club and organizes fundraisers, with the proceeds and goods and services benefiting HSW.

In 2008, we expanded with a new wing, featuring an open lobby and dedicated rooms for intake, isolation, kittens, medical exams, and long-term feline residents to roam freely.

In 2009 we sought to expand our reach by partnering with PetSmart in Middletown and Monroe to run their respective feline adoption centers.

Facing deteriorating kennel structures in 2017, HSW launched a major renovation. The aging chain-link and concrete kennels posed safety and sanitation concerns, leading to their demolition and the construction of 23 new fiberglass and reinforced plastic kennels, thanks to volunteer support.

In 2019, we formalized our feline foster program. Previously, neonatal kittens requiring round-the-clock care were fostered by staff, board members, and a small pool of volunteers. That same year, HSW revamped its onsite dog park, improving functionality and safety. With donated materials and volunteer assistance, we expanded the park to include two separate areas for safer meet-and-greet sessions and a new atrium entry for added security.

Most recently, in 2024, we made the difficult decision to discontinue operations of our crematory, which had served the community for over 20 years. Rising repair costs made continued operation financially unfeasible, marking the end of an era for this service.

Through decades of change and growth, HSW remains committed to our mission—providing shelter, care, and second chances for animals in need.

# SHELTER OVERVIEW



## Mission

HSW believes that all animals have a natural right to humane treatment including proper care, respect, and safe shelter. Our primary mission is to provide care while finding permanent, loving homes for the many animals that come to our door.

To further this mission we undertake activities including, but not limited to developing relationships with potential fosters, volunteers, donors, business partners, local and out-of-state shelters.

## Town Contracts

HSW contracts with the local towns of Shawangunk, Mamakating, Crawford, and Montgomery to provide essential support. Under these agreements, HSW accepts healthy, non-aggressive dogs brought in by Animal Control Officers. These animals are provided a safe and caring environment while awaiting potential reunification with their owners during the 7-day stray holding period or adoption into new homes if unclaimed.

These contracts help reduce the burden on municipal resources and helps uphold community safety and animal welfare standards.



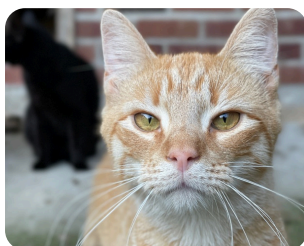
# LOVE IS HOME

# 500 ADOPTIONS IN 2024



## Adoptions by State

| States             | Adoptions  |
|--------------------|------------|
| Massachusetts      | 1          |
| New Jersey         | 9          |
| NJ                 | 1          |
| NY                 | 480        |
| Ohio               | 1          |
| Pennsylvania       | 7          |
| Virginia           | 1          |
| <b>Grand Total</b> | <b>500</b> |



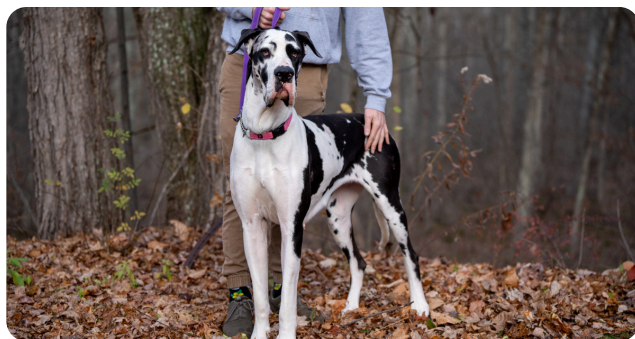
## Why it matters

In 2024 HSW successfully placed 500 animals into loving homes, demonstrating the strength of our adoption program and commitment to saving lives. These adoptions span multiple states and towns, reflecting the depth of our community reach.

As we look to the future, we must not only maintain but expand our efforts to keep pace with the upcoming NYS Shelter Standards Law. This legislation brings necessary changes that will enhance the quality of care for animals in shelters—but it also presents new challenges that require immediate action and investment.

## Adoptions by Town

| Towns              | Adoptions | Towns             | Adoptions | Towns              | Adoptions  |
|--------------------|-----------|-------------------|-----------|--------------------|------------|
| Arlington          | 1         | Hasbrouck Heights | 2         | Pine Bush          | 24         |
| Athens             | 1         | Haverstraw        | 1         | Pleasant Valley    | 1          |
| Beacon             | 2         | Hawley            | 1         | Port Jervis        | 3          |
| Bloomington        | 9         | High Falls        | 1         | Poughkeepsie       | 6          |
| Bourne             | 1         | Highland          | 4         | Ramsey             | 1          |
| Brooklyn           | 2         | Highland Lake     | 1         | Rock Tavern        | 1          |
| Campbell Hall      | 10        | Highland Mills    | 10        | Rome               | 2          |
| Carmel             | 1         | Hurley            | 1         | Ruby               | 1          |
| Centerville        | 1         | Hyde Park         | 1         | Salt Point         | 1          |
| Central Valley     | 4         | Irvington         | 1         | Slate Hill         | 3          |
| Chester            | 8         | Jamaica           | 1         | Slingerlands       | 1          |
| Circleville        | 3         | Jersey City       | 1         | Staten Island      | 1          |
| Clintondale        | 2         | Kerhonkson        | 8         | Stephentown        | 1          |
| Closter            | 1         | Kingston          | 1         | Suffern            | 2          |
| Cornwall           | 6         | Lake Hopatcong    | 1         | Summit             | 1          |
| Cornwall On Hudson | 5         | Lake Katrine      | 1         | Thiells            | 1          |
| Cortland           | 1         | Mahopac           | 1         | Thompson Ridge     | 1          |
| Cortland Manor     | 1         | Marlboro          | 1         | Troy               | 1          |
| Cresskill          | 1         | Matamoras         | 2         | Valley Cottage     | 1          |
| Dingmans Ferry     | 3         | Maybrook          | 5         | Walden             | 50         |
| Eldred             | 2         | Middletown        | 55        | Walkill            | 31         |
| Elizabeth          | 1         | Modena            | 3         | Warwick            | 12         |
| Ellenville         | 6         | Mongaup Valley    | 1         | Washingtonville    | 6          |
| Elmhurst Township  | 1         | Monroe            | 25        | Wawarsing          | 1          |
| Emerson            | 1         | Montgomery        | 44        | West Point         | 1          |
| Esopus             | 1         | Monticello        | 2         | Westtown           | 2          |
| Fairport           | 1         | Nanuet            | 1         | Windham            | 1          |
| Florida            | 2         | New Hampton       | 2         | Woodridge          | 1          |
| Flushing           | 1         | New Paltz         | 16        | Wurtsboro          | 5          |
| Fort Montgomery    | 1         | New Windsor       | 7         | <b>Grand Total</b> | <b>500</b> |
| Gansevoort         | 1         | Newburgh          | 22        |                    |            |
| Gardiner           | 9         | North Baldwin     | 1         |                    |            |
| Garrison           | 1         | NY, NY            | 1         |                    |            |
| Goshen             | 9         | Otisville         | 2         |                    |            |
| Greenwood Lake     | 3         | Peekskill         | 1         |                    |            |
| Harriman           | 4         | Philmont          | 2         |                    |            |





# PROGRAMMING

★ ★ 80,000+ ANNUAL VOLUNTEER HOURS



## Community Outreach

Our commitment to animal welfare extends beyond shelter walls through a variety of community-focused programs. **From Junior Advocacy Days** that inspire young animal lovers, to **Rescue Readers** that build confidence in young readers, HSW is a place for connection and compassion. Our **Feline Foster Program** and **Canine Playgroups** help animals thrive outside traditional kenneling, while **Sunday Funday Dog Walks** and **Open House Coffee Chats** welcome the public into our mission.

- Feline Foster Program
- Open House Coffee Chats
- Canine Playgroups
- Yard Sale: Little Sale Room at HSW
- Sunday Funday dog walks
- Have-a-Heart trap rentals
- Community Kibble Food Pantry
- Junior Advocacy Days
- Rescue Readers
- Seniors for Seniors

## Our Volunteers

HSW is proud to have a vibrant and diverse volunteer program that plays a vital role in our day-to-day operations and community impact. From individuals fulfilling **court-ordered service to enthusiastic scout troops, school groups, church volunteers, and day service programs**, our volunteers help with everything from cleaning and animal care to socialization and event support.

A key part of our volunteer effort takes place off-site at our **PetSmart adoption centers in Middletown and Monroe, NY**. These satellite locations extend our reach and allow more animals to be seen, loved, and adopted into forever homes. Volunteers at these centers care for the cats on-site by cleaning enclosures, providing enrichment, and engaging with potential adopters.



# WHY NOW?



Our 50+ year old aging facility is struggling to keep up with modern animal care standards, growing community needs, and new **NYS Shelter Standards Law**. To meet these challenges, we're launching a **Capital Campaign** to fund critical improvements.

To comply with these new standards, HSW must undertake critical facility upgrades:

- **General Facility Improvements** – Upgrading indoor surfaces, drainage systems, air handling, noise control, lighting and ammonia level management to enhance the well-being of every animal in our care.
- **Animal Housing Enhancements** – Creating safer, more spacious, and comfortable living environments to align with modern sheltering practices.

Your support of our capital campaign will help us meet these new standards, ensuring that HSW remains a safe, welcoming place for every animal in need.

All donations raised through our capital campaign will fund our renovations, beginning Summer 2025. In anticipation of Chapter 1 of our remodel, we are raising \$40K for our furnace / HVAC upgrade.

We've broken our capital campaign into manageable chapters, each focused on a specific project or space. Once a chapter goal is met, any additional funds raised will roll into the next chapter, allowing momentum and donor generosity to directly support the next urgent need.





# CHAPTER 1 Urgent Furnace & HVAC Upgrade



Our 50-year-old facility is struggling to keep up with modern animal sheltering standards, the growing needs of our community, and evolving regulatory requirements—including the new NYS Shelter Standards Law. Unfortunately, our current building does not meet these new standards. To address these challenges, we are launching a capital campaign to fund critical improvements.



## Why It Matters

Our kennel area is home to 30 to 35 dogs at any given time, and maintaining a comfortable, safe environment for them is a top priority.

As our facility ages, so does our 1980's heating system, and we are now in urgent need of a new HVAC system to ensure our animals stay warm during the cold winter months and cool during the summer.

The project will be completed by Sean Murphy owner of Perfect Temperature in Wallkill, at a cost of \$40,000. This upgrade is essential not only for the well-being of our animals but also to meet modern sheltering standards and provide a healthier, more comfortable space for the pets in our care.

# \$40K





## CHAPTER 2 Meet & Greet / Enrichment Room + Small Dog Room



Our 50-year-old facility is struggling to keep up with modern animal sheltering standards, the growing needs of our community, and evolving regulatory requirements—including the new NYS Shelter Standards Law. Unfortunately, our current building does not meet these new standards. To address these challenges, we are launching a capital campaign to fund critical improvements.



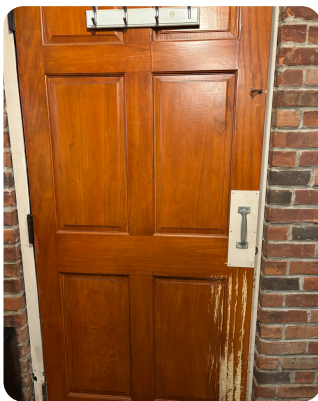
### Why It Matters

**Our Meet & Greet / Enrichment Room** is a vital space for both our dogs and potential adopters. This renovation will transform the area into a versatile, safe, and welcoming environment that supports training, enrichment, and adoption meetings. Current meets take place in our lobby or onsite playyard.

#### Planned Upgrades:

- new flooring, walls, and lighting
- baseboard heating upgrade to keep the space comfortable year-round
- Improved entryways and safety features for secure interactions
- New interior door to create a better flow between shelter spaces

**\$8K**



**Small Dog Room** is a space that houses any canines that are 30 pounds or less. This space needs minor updates including:

- New flooring, paint, and lighting
- 2 new interior doors to enter the space

**\$3K**



**\$11K TOTAL**

# NAMING OPPORTUNITIES



|  |            |
|--|------------|
| Furnace upgrade (Ch. 1):                     | \$40,000   |
| Meet + Greet / Dog Enrichment Room (Ch. 2) : | \$8,000    |
| Small Dog Room (Ch. 2):                      | \$3,000    |
| Cat Room 1 (Ch. 3):                          | \$7,000    |
| Cat Room 2 (Ch. 3):                          | \$7,000    |
| Cat Room 3 (Ch. 3):                          | \$7,000    |
| Cat Room 4 (Ch. 3):                          | \$7,000    |
| Cat Room 5 (Ch. 3):                          | \$7,000    |
| Indoor Dog Kennel - 23 total (Ch. 4) :       | \$450 ea   |
| Cat Isolation Room (Ch. 5):                  | \$10,000   |
| Dog Isolation Room (Ch. 6):                  | \$3,000    |
| Outdoor Dog Kennel - 15 total (Ch. 7)        | \$5,000 ea |
| Outdoor Enrichment Area (Ch. 7):             | \$25,000   |
| Dog Kitchen (Ch. 8):                         | \$10,000   |
| Dog Grooming Room (Ch. 9):                   | \$8,000    |
| ½ Door Room for dogs (Ch. 10):               | \$4,000    |
| New Roof and Facade Refresh (Ch. 11):        | \$60,000   |
| Enrichment / Storage Space (Ch. 12):         | \$12,000   |
| Out Building revamp (Ch. 13):                | \$150,000  |

**TRACY WILSON,** President  
president@waldenhumane.org



**TRISHA CRAWLEY,** Treasurer  
treasurer@waldenhumane.org

**RYAN BONIFACE,** Manager  
manager@waldenhumane.org

**LISA DENNIS,** Community Outreach  
lisa@waldenhumane.org

**2489 ALBANY POST ROAD  
WALDEN, NY 12586**

**P: 845-778-5115**

  @waldenhumane

[www.waldenhumane.org/capital](http://www.waldenhumane.org/capital)



# IN-KIND DONATIONS:



## Tools, Talent & Materials that Make a Difference

We're committed to creating a shelter that meets modern standards, enriches the lives of animals in our care, and serves the needs of our community. While financial contributions are vital, in-kind donations of materials, equipment, and skilled labor can be just as impactful in helping us reach our capital campaign goals.

If you or your business can contribute supplies, services, or professional expertise, your gift will directly support critical upgrades to our 50-year-old facility and help stretch every dollar we raise.

### Skilled Labor & Services

- Licensed electricians (for interior and outbuilding projects)
- Licensed plumbers (kitchen, kennel, and grooming areas)
- General contractors or handyperson services
- Flooring installers (commercial-grade, durable materials)
- Painters (interior rooms)

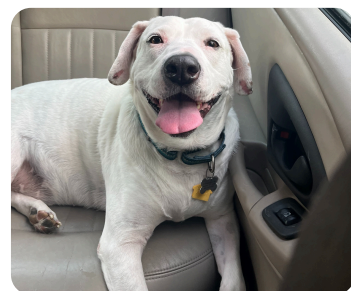


### Building & Renovation Materials

- Shelving units (freestanding and wall-mounted)
- Durable flooring (vinyl, epoxy-coated concrete)
- Interior/exterior doors
- Lighting fixtures (LED, energy-efficient)
- Stainless wall panels for hygiene zones
- Plumbing fixtures and cabinetry for kitchen & grooming areas

### Facility Supplies & Fixtures

- Laundry appliances and storage
- Sanitation stations and janitorial shelving
- Weatherproof kennel fencing and gates
- Shade structures or canopies for outdoor enrichment



**TRACY WILSON,** President  
president@waldenhumane.org

**TRISHA CRAWLEY,** Treasurer  
treasurer@waldenhumane.org

**RYAN BONIFACE,** Manager  
manager@waldenhumane.org

**LISA DENNIS,** Community Outreach  
lisa@waldenhumane.org

**2489 ALBANY POST ROAD  
WALDEN, NY 12586**

**P: 845-778-5115**

  @waldenhumane

[www.waldenhumane.org/capital](http://www.waldenhumane.org/capital)

